

ULTRAGLIDE MONORAIL

aliplast
aluminium systems



sliding system

Ultraglide Monorail

- a system featuring improved thermal performance, used to design sliding or lift-sliding structures
- maximum leaf weight: 400 kg
- single-rail frame
- possible structure variants: 2-component (sash + fix), 3-component (sash + fix + sash), 4-component (2 sashes + 2 fixes)
- optional to use glazing from the outside, which makes it possible to use large-size, heavy infills
- there is possibility of use Insect System (fly screens are a practical and an extremely functional protection against insects)
- a wide range of colours – RAL palette (Qualicoat 1518), texture colours, Aliplast Wood Colour Effect (wood-like colours), Aliplast Loft View – colours imitating stone surfaces (Qualideco PL-0001), anodised colour (Qualanod 1808), bi-colour

ULTRAGLIDE MONORAIL

aliplast
aluminium systems

sliding system

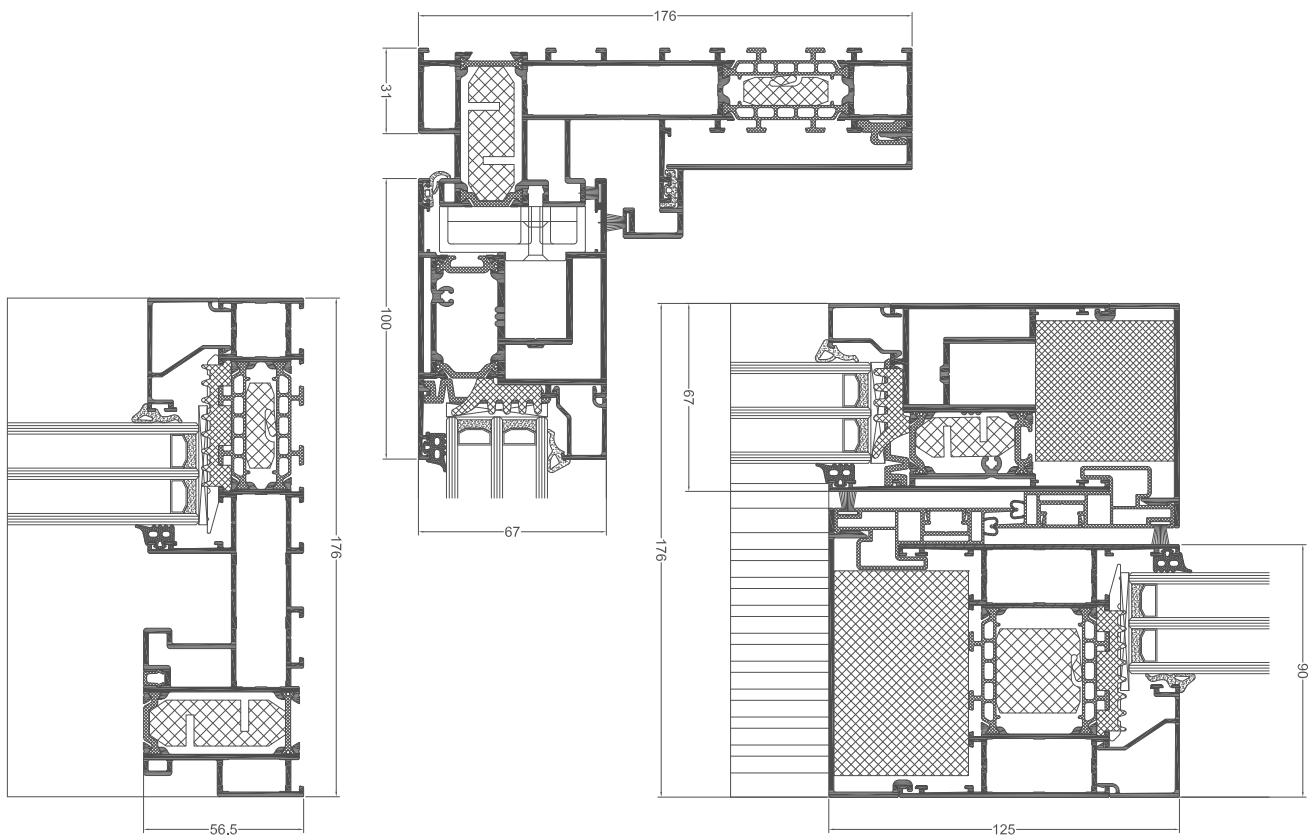
technical specification

system	material	depth of frame	depth of leaf	glazing range	weight of leaf	type of doors	acoustic
Ultraglide Monorail	aluminium/thermal insulation	176 mm	67 mm	sash 14-52 mm, fix 12-72 mm	to 250 kg sliding option/ to 400 kg lift-sliding option	sliding, lift-sliding	43 (-2,-6) dB

performance

system	thermal insulation Uf*	air permeability	windload resistance	watertightness
Ultraglide Monorail	Uf from 0,93 W/m ² K	Class 4; EN 12207	Class C5 (2000 Pa); EN 12210	Class E750 (750 Pa); EN 12208

* Thermal insulation is dependent on a combination of profiles and thickness of the filling.



Ultraglide Monorail
- cross section through frame (UG611)

Ultraglide Monorail - cross section through
frame with sash (UG611 + UG820N)

Ultraglide Monorail - cross section through
the connection sash - sash (UG821N + UG620)