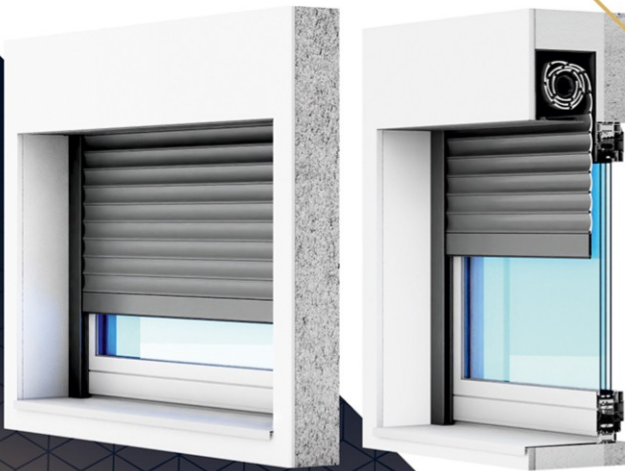


# ROLLER SHUTTER flush mounted

**aliplast**  
aluminium systems

[www.aliplast.pl](http://www.aliplast.pl)



## HIDE

Flush mounted roller shutters systems are mainly designed for new buildings. This systems brings excellent thermal insulation performance as they do not require any modifications to the existing windows, doors or lintels, and thus do not affect the building's energy use. What's more, they perfectly fit the building's facade.

### 3 SIZES

the box width and height  
137, 165, 180 mm

### ALUMINIUM

The shutter roller is made of aluminum. This ensures structural stability and high product quality. The construction of the roller shutters is made of extruded aluminium that ensures its durability and resistance to abrasion and weathering.

characteristic

## installation possibilities

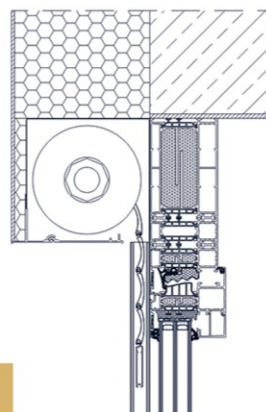
## control

### manual or automatic

*manual:* with a with a belt, a crank, or a belt with crank gearing

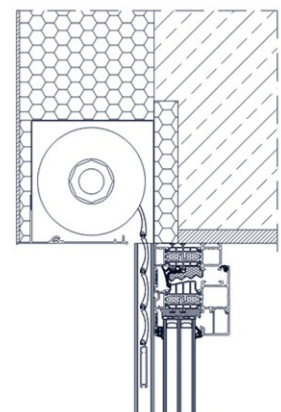
*automatic:* by a remote, a key or switch controls

*possibility of intelligent roller shutters control*



a

installation on the extension



b

installation on the lintel